

PacStaMgr – PACSystems Station Manager

Introduction

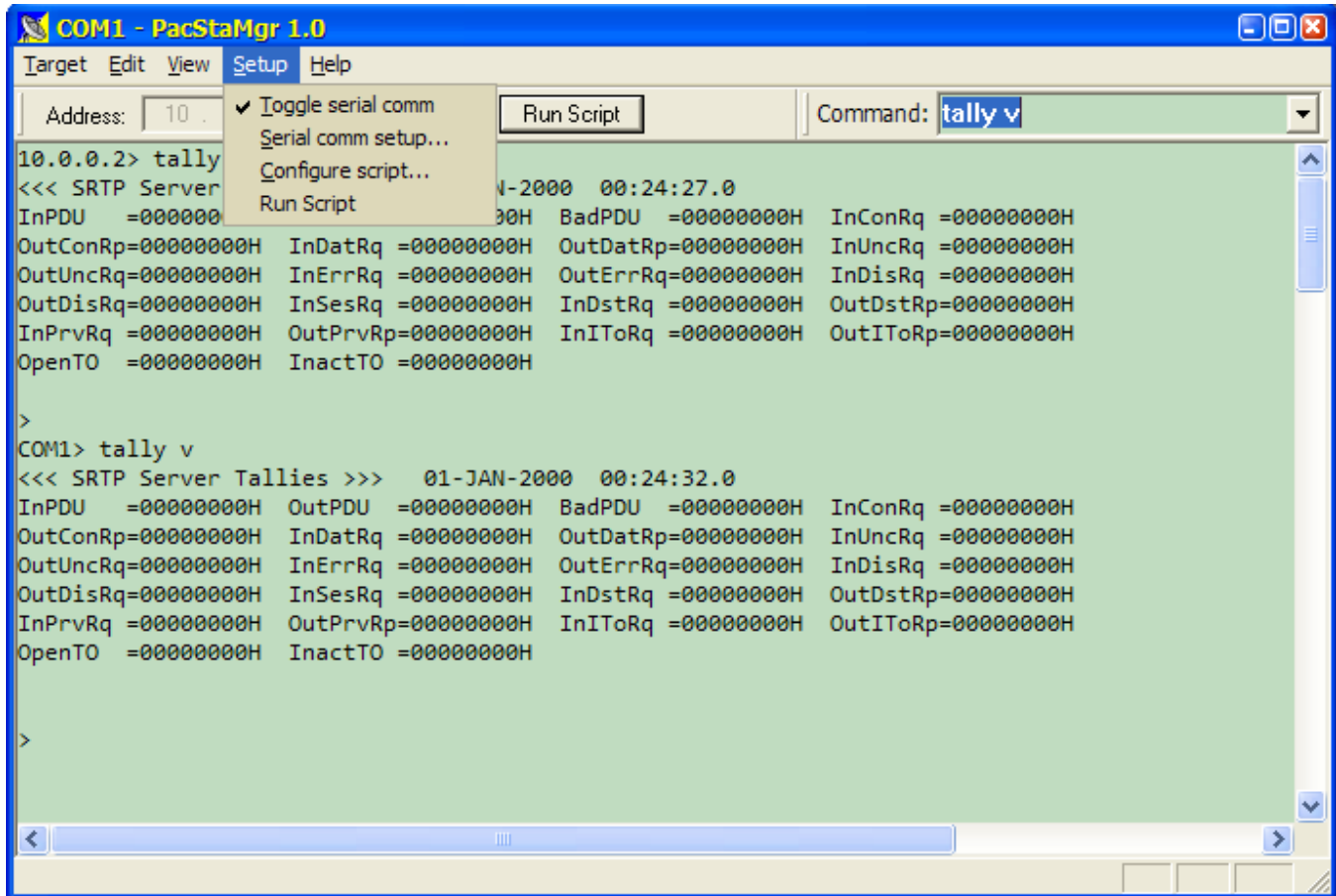
PacStaMgr is a new station manager tool for the Ethernet module. It provides support for both Ethernet and serial connection to the Station Manager, and allows the user to easily switch between these connection methods. Display from either connection is presented seamlessly in the same scrolling display.

For example, in the following figure the user manually issued the *tally v* command via an Ethernet connection to 10.0.0.2, then selected the Serial checkbox, and hit the return key to issue the same command through the serial connection (configured for COM1). The command prompt is used to indicate the connection method that was active when the command was issued.

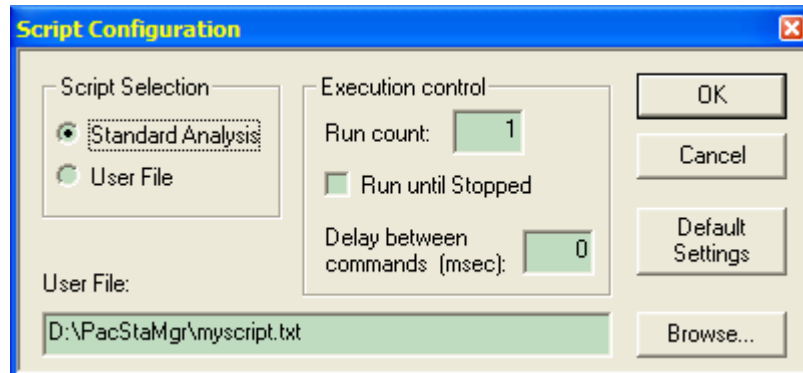
The screenshot shows the PacStaMgr 1.0 application window. The title bar reads 'COM1 - PacStaMgr 1.0'. The menu bar includes 'Target', 'Edit', 'View', 'Setup', and 'Help'. Below the menu bar, there is a section for connection settings: 'Address: 10.0.0.2', a checked 'Serial' checkbox, a 'Run Script' button, and a 'Command: tally v' dropdown menu. The main display area shows the output of the 'tally v' command. The first output is from the Ethernet connection, indicated by the prompt '10.0.0.2>'. The second output is from the Serial connection, indicated by the prompt 'COM1>'. Both outputs show the same data: 'SRTP Server Tallies' for 01-JAN-2000 at 00:24:27.0 and 00:24:32.0, followed by a grid of 16 hexadecimal values representing various server statistics.

```
COM1 - PacStaMgr 1.0
Target Edit View Setup Help
Address: 10.0.0.2 [X] Serial Run Script Command: tally v
10.0.0.2> tally v
<<< SRTP Server Tallies >>> 01-JAN-2000 00:24:27.0
InPDU =00000000H OutPDU =00000000H BadPDU =00000000H InConRq =00000000H
OutConRp=00000000H InDatRq =00000000H OutDatRp=00000000H InUncRq =00000000H
OutUncRq=00000000H InErrRq =00000000H OutErrRq=00000000H InDisRq =00000000H
OutDisRq=00000000H InSesRq =00000000H InDstRq =00000000H OutDstRp=00000000H
InPrvRq =00000000H OutPrvRp=00000000H InIToRq =00000000H OutIToRp=00000000H
OpenTO =00000000H InactTO =00000000H
>
COM1> tally v
<<< SRTP Server Tallies >>> 01-JAN-2000 00:24:32.0
InPDU =00000000H OutPDU =00000000H BadPDU =00000000H InConRq =00000000H
OutConRp=00000000H InDatRq =00000000H OutDatRp=00000000H InUncRq =00000000H
OutUncRq=00000000H InErrRq =00000000H OutErrRq=00000000H InDisRq =00000000H
OutDisRq=00000000H InSesRq =00000000H InDstRq =00000000H OutDstRp=00000000H
InPrvRq =00000000H OutPrvRp=00000000H InIToRq =00000000H OutIToRp=00000000H
OpenTO =00000000H InactTO =00000000H
>
```

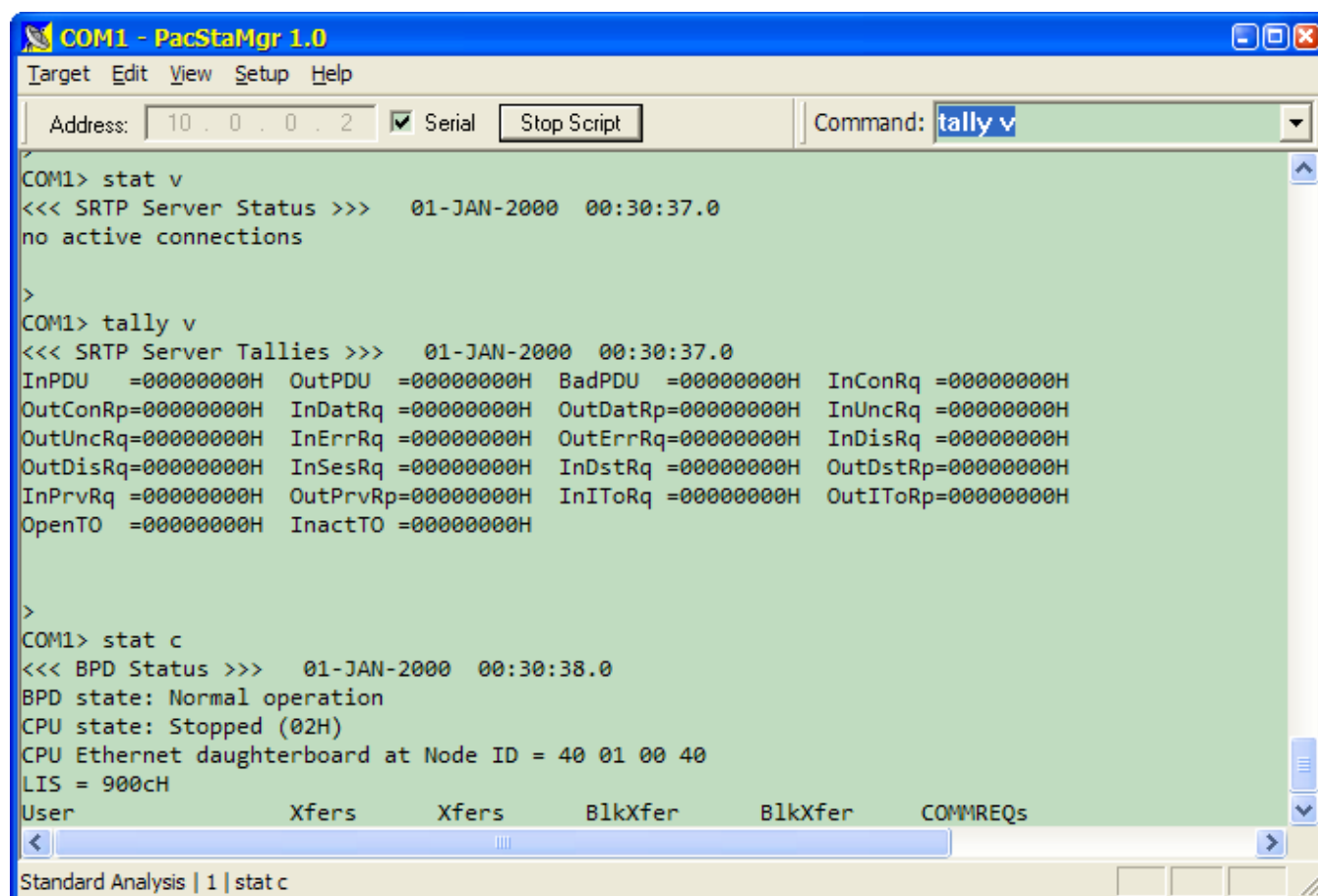
The Setup menu provides access to the serial port and script configuration tools, as shown below.



The script configuration allows the user to select Standard Analysis, which mimics the PacsAnalyzer command sequence, or to select a user file. The user file is a simple text file containing station manager commands, with each command on a separate line. Commands that start with # or @ are ignored. Script configuration also provides execution control options. The Default Settings button sets the Run count to 1 and the delay to 0 milliseconds.



To run the script, click on the Run Script button, which then turns into a Stop Script button. As the script executes, the status bar displays the name of the script, the current run count for the script, and the current command being executed.



All settings are preserved in the Windows registry, to minimize the need for user setup the next time PacStaMgr is run.

Additional help is available from the menu item Help → Usage Notes.